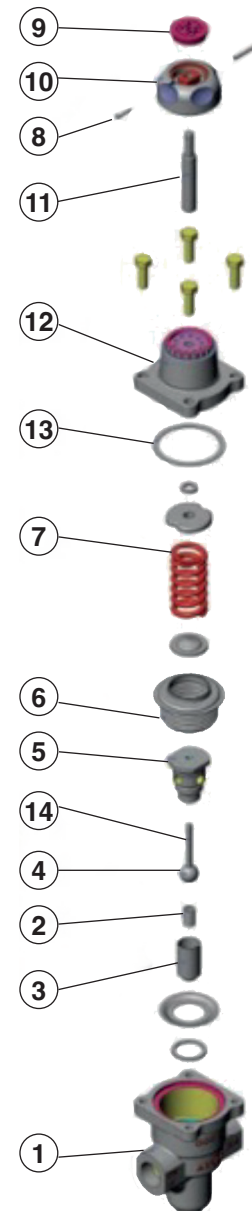
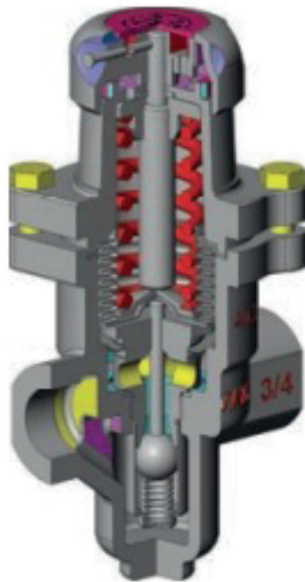




Pressure reducing valves, PN 25, three different springs for three different range of outlet pressure.

Available versions

- orange spring
- grey spring
- green spring

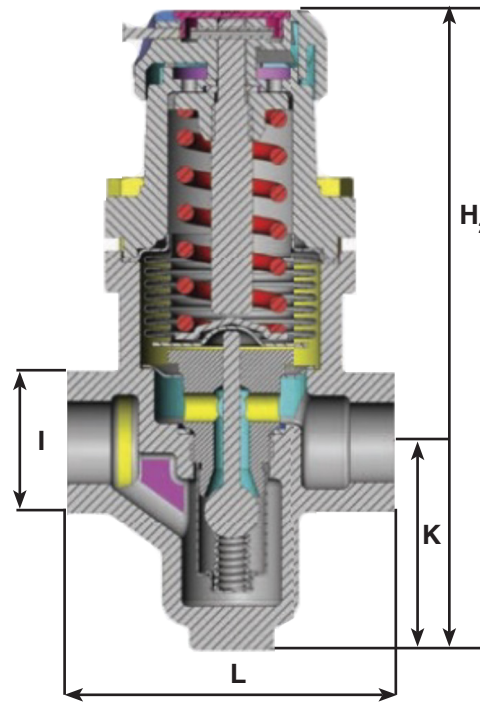


N°	ITEM	MATERIAL	STANDARD
1	BODY	DUCTILE IRON	GGG40.3
2	VALVE SPRING	STAINLESS STEEL	AISI 316
3	STRAINER	STAINLESS STEEL	AISI 316
4	VALVE	STAINLESS STEEL	AISI 420
5	SEAT	STAINLESS STEEL	AISI 431
6	BELLOW	STAINLESS STEEL	AISI 316
7	PRESSURE ADJUSTMENT SPRING	STAINLESS STEEL	-
8	LOCK PIN	TOOL STEEL	-
9	SPRING ADJUSTMENT COVER	POLY-PROPYLENE	-
10	PRESSURE ADJUSTMENT COVER	POLY-PROPYLENE	-
11	PRESSURE ADJUSTMENT STEM	STAINLESS STEEL	AISI 316
12	UPPER COVER	ALLUMINIUM	-
13	COVER GASKET	GRAPHITE	-
14	VALVE PRESSURE STEM	STAINLESS STEEL	AISI 316L

TECNICAL DETAILS

- Body ductile iron.
- Trim in stainless steel.
- Threaded ends: F/F BSP.
- Sizes: from 1/2" to 1".
- Three different springs related to outlet pressure:
 - Grey spring = 0,14 – 1,70 bar.
 - Green spring = 1,40 – 4,00 bar.
 - Orange spring = 3,50 – 8,60 bar.
- These valves reduce the pressure of medium in the plant. The medium could be: steams, gas, compressed air.
- Rating: PN 25.
- Maximum inlet pressure: 19 bar.
- Maximum outlet pressure: 8,6 bar.
- Working maximum temperature: 210°C.
- Suitable for horizontal installation following the flow arrow on the body.

DIMENSIONS



DIMENSIONS					
SIZE	H (mm)	L (mm)	K (mm)	Øi (mm)	WEIGHT (Kg)
1/2"	186,5	83	65	36	1,60
3/4"	186,5	96	65	41	1,70
1"	186,5	108	65	45	2,00