

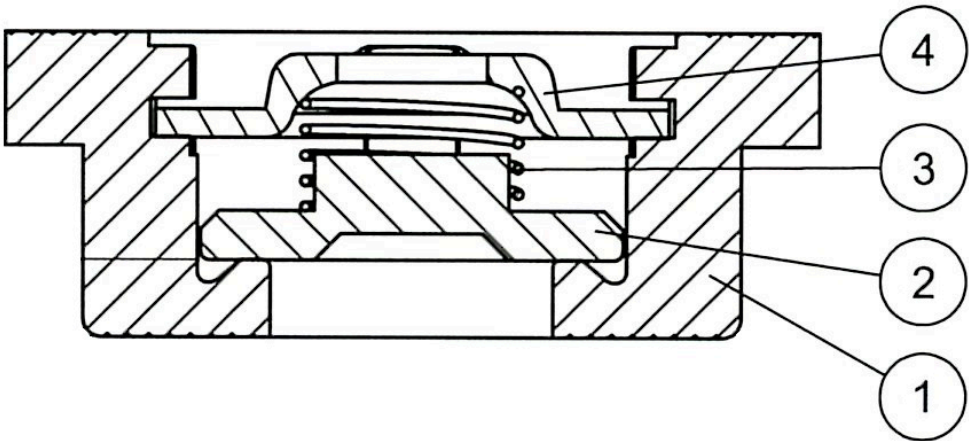


Wafer disc check valves, PN 40 single plate with spring return, metallic seat

AT.EX. certified for zone 1 and 21

Available versions

- Metallic seat

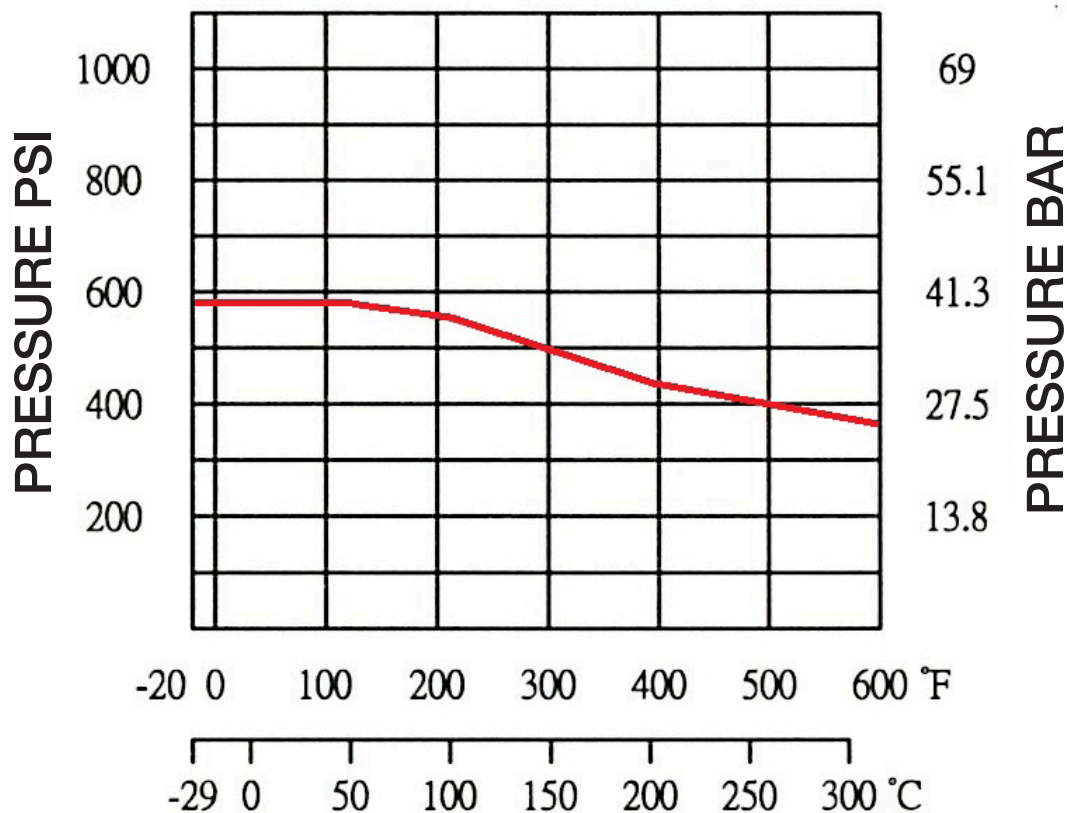


CV-304			
N°	ITEM	MATERIAL	STANDARD
1	BODY	STAINLESS STEEL	ASTM A351 C8M
2	DISC	STAINLESS STEEL	ASTM A351 C8M
3	SPRING	STAINLESS STEEL	AISI 316
4	SPRING CAP	STAINLESS STEEL	AISI 316

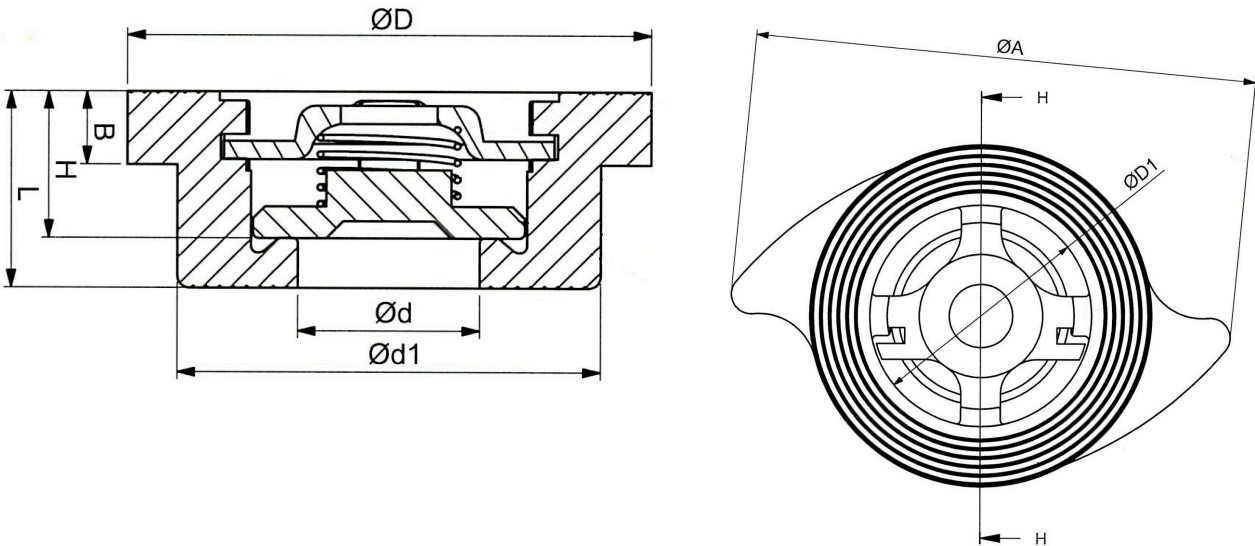
TECHNICAL DETAILS

- Stainless steel body.
- Stainless steel disc.
- Metallic seat.
- Sizes from DN 15 to DN 100.
- Suitable for installation in all directions.
- Suitable for different kind of fluids: liquid, steam, gas.
- Suitable for PN 10/16/25/40 and ANSI 150/300 flanges.
- Rating PN 40.
- Working temperature: -29°C / +315°C.
- Hydraulic tests according to ISO 5208.
- Body tested at 60 bar.
- Seat tested at 44 bar.

P-T RATING



DIMENSIONS



DN	$\varnothing d$ (mm)	$\varnothing d1$ (mm)	$\varnothing D$ (mm)	L (mm)	H (mm)	$\varnothing d1$ (mm)	B (mm)	$\varnothing A$ (mm)	Cv	kg
15	15	34.8	43.0	16.0	12.0	27.9	6.0	60.0	5.9	0.11
20	20	45.0	53.0	19.5	14.0	35.8	7.7	69.5	8.0	0.20
25	25	50.8	63.0	22.0	16.6	41.3	8.0	80.5	12.7	0.29
32	32	60.2	72.5	28.0	22.3	49.2	9.0	90.5	16.6	0.42
40	40	69.7	82.0	31.5	24.5	57.0	10.0	101.0	25.5	0.60
50	50	89.8	95.2	40.0	33.2	76.1	8.0	115.0	41.1	0.94
65	65	102.0	115.6	45.0	38.3	87.6	7.5	142.0	58.5	1.36
80	80	121.0	129.4	50.0	42.0	106.2	8.0	153.5	86.2	1.89
100	100	145.0	154.2	60.0	51.3	128.5	12.0	179.8	117.5	3.10