

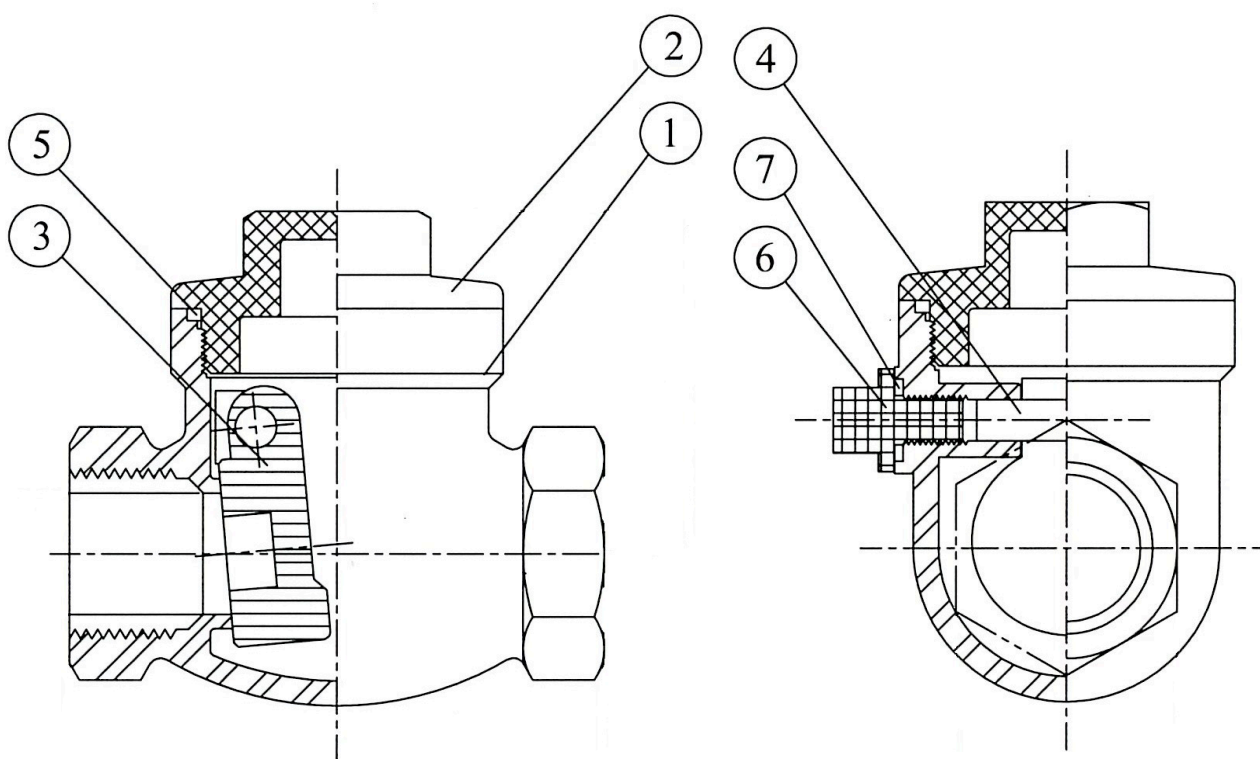


Clapet check valves, rating PN 16, metal seated.

AT.EX. certified for zone 1 and 21

Available versions

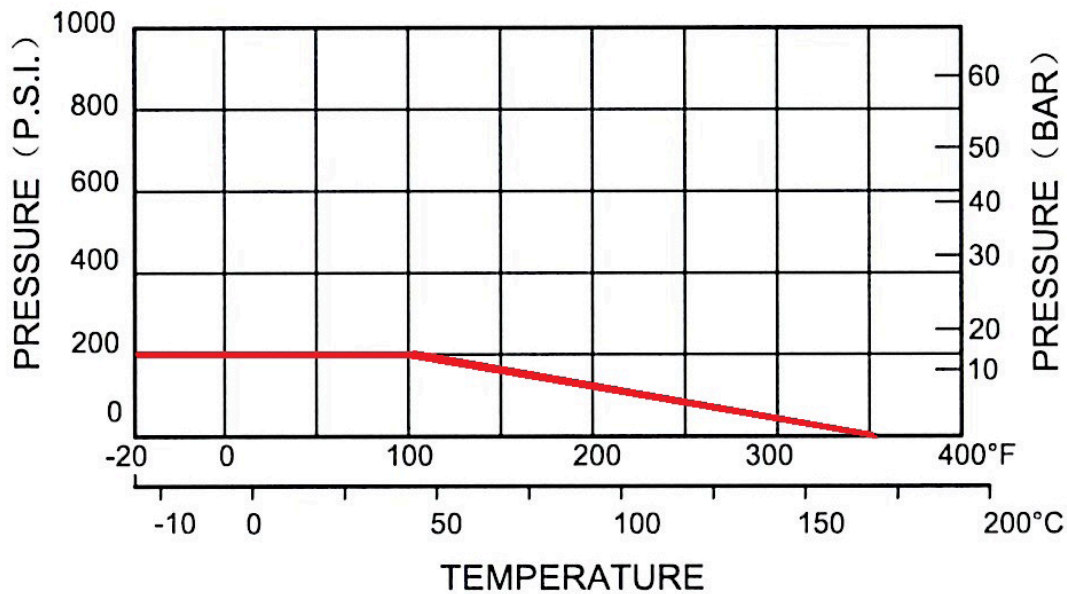
- F/F BSP or NPT threaded



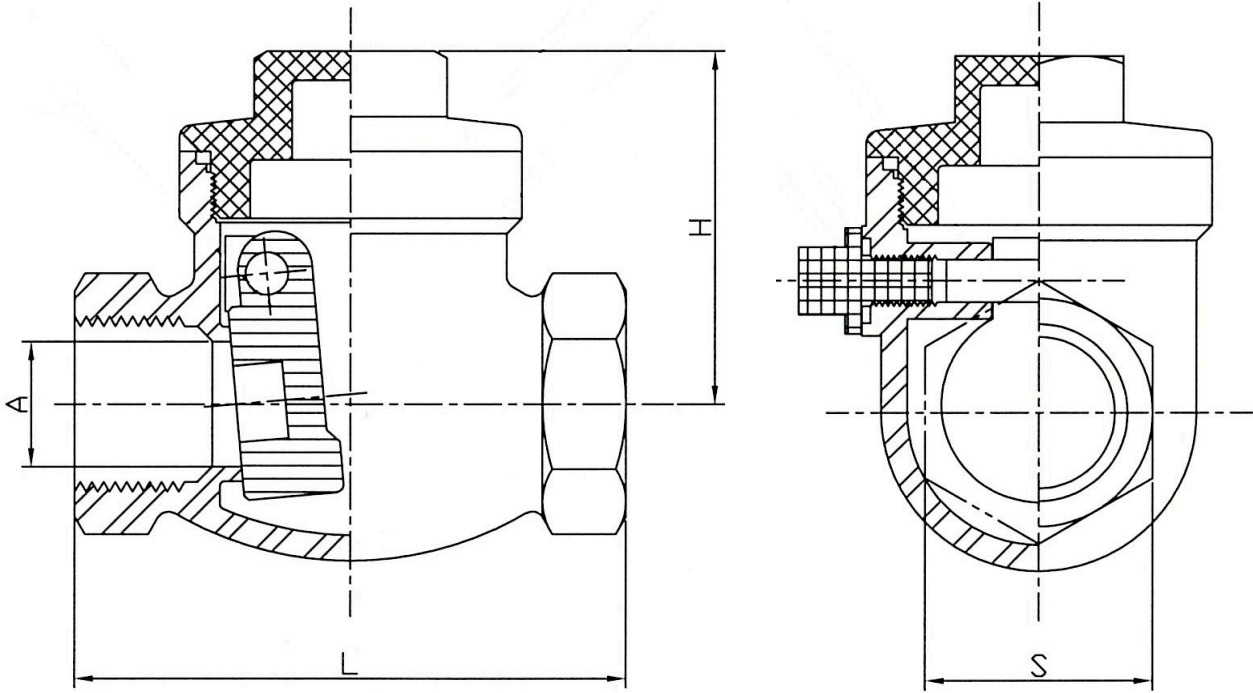
VT-C			
N°	ITEM	MATERIAL	STANDARD
1	BODY	STAINLESS STEEL	ASTM A351 C8M
2	COVER	STAINLESS STEEL	ASTM A351 C8M
3	DISC	STAINLESS STEEL	ASTM A351 C8M
4	HANGER PIN	STAINLESS STEEL	AISI 316
5	GASKET	PTFE	-
6	PLUG	STAINLESS STEEL	AISI 316
7	PLUG GASKET	PTFE	-

TECHNICAL DETAILS

- Stainless steel body.
- Stainless steel disc.
- Metal seated.
- Sizes from 1/4" to 2".
- Ends: F/F BSP (standard in stock) or NPT (on request).
- Working temperature: -20°C / +160°C.
- Rating PN 16.
- Hydraulic tests according to ISO 5208.
- Body tested at 24 bar.
- Seat tested at 18 bar.



DIMENSIONS



DN	A (mm)	H (mm)	L (mm)	S (mm)	Cv	Kgs
1/4"	11	42	65	27	2.56	0.30
3/8"	15	42	65	27	2.56	0.30
1/2"	15	42	65	27	4.55	0.30
3/4"	20	51	80	32	10.64	0.42
1"	25	60	90	41	19.72	0.66
1.1/4"	32	67	105	50	31.50	1.02
1.1/2"	40	75	120	58	46.42	1.44
2"	65	81	140	70	86.77	2.14