

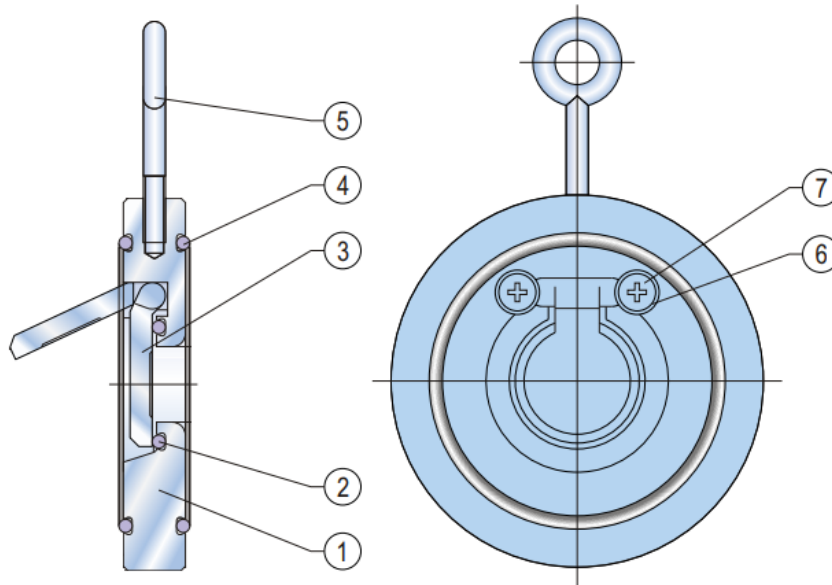


Wafer clapet check valves, PN 40
single plate without spring return.

AT.EX. certified for zone 1 and 21

Available versions

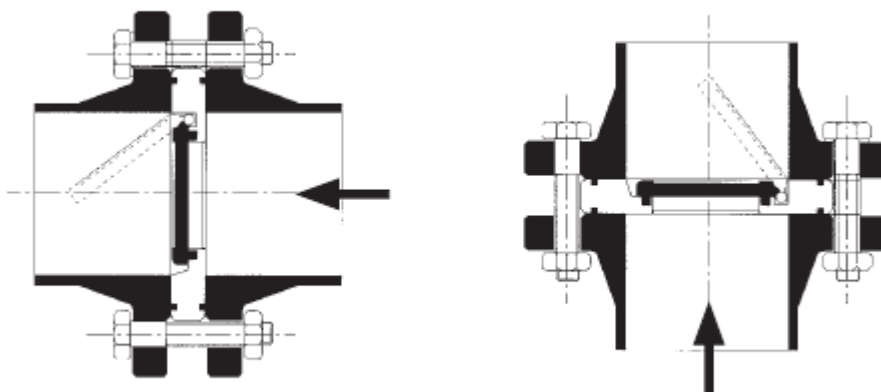
- CW-105T
- CW-316T



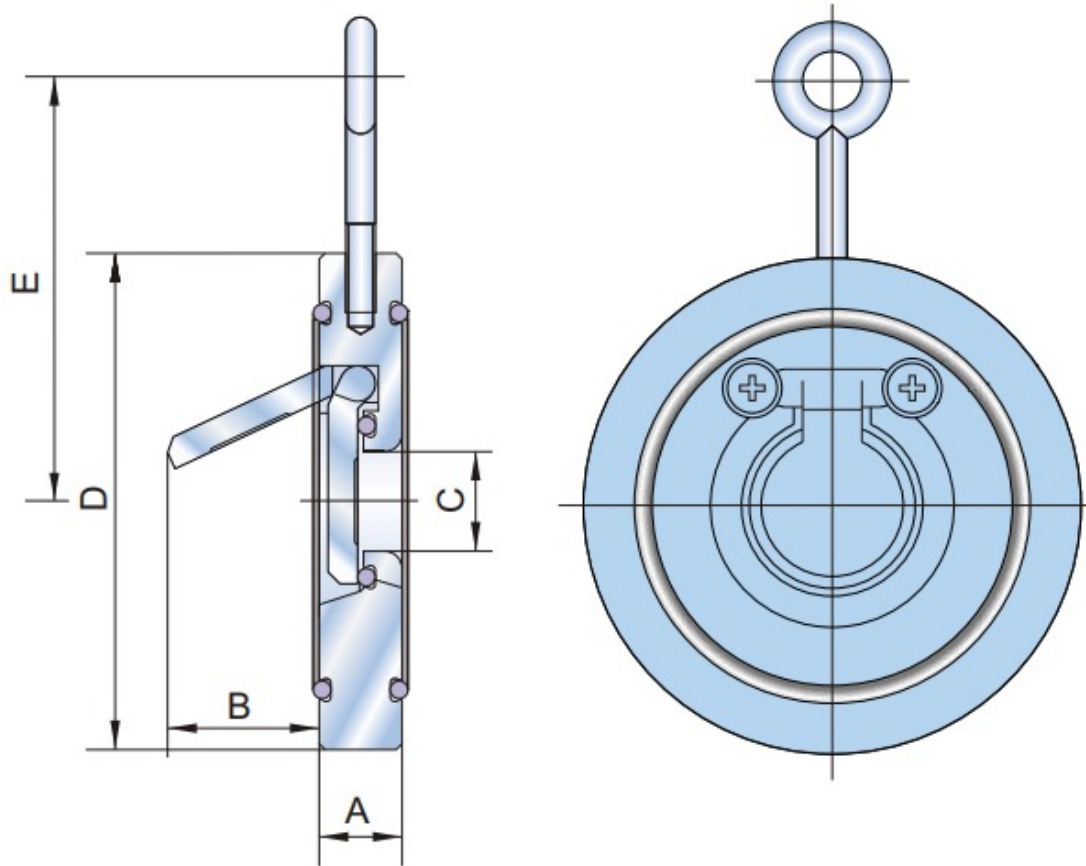
N°	ITEM	MATERIAL	STANDARD
1	BODY	CARBON STEEL	ASTM A105
		STAINLESS STEEL	AISI 316
2	SEAT	PTFE	-
3	DISC	CARBON STEEL	ASTM A216 WCB
		STAINLESS STEEL	ASTM A351 CF8M
4	O-RING	PTFE	-
5	EYEBOLT	STEEL	-
6	WASHER	STAINLESS STEEL	-
7	SCREW	STAINLESS STEEL	-

TECHNICAL DETAILS

- Body: stainless steel (CW-316T) or carbon steel (CW-105T).
- Disc: stainless steel (CW-316T) or carbon steel (CW-105T).
- Seat: PTFE.
- Sizes from DN 32 to DN 300.
- Suitable for installation in horizontal way or vertical way if flow is from down to up.
- Eyebolt is useful for installation.
- Suitable for different kind of fluids: liquid, steam, gas.
- Suitable for PN 16/40 flanges.
- AT.EX. certified for zone 1 and 21.
- Working temperature:
 - 50°C / +180°C (CW-316T).
 - 10°C / +180°C (CW-105T).
- Rating PN 40.
- Hydraulic tests according to ISO 5208.
 - Body tested at 60 bar.
 - Seat tested at 44 bar.
- Minimum pressure for opening disc.
 - Disc in vertical position (horizontal flow).
 - DN 32-150 = 3mbar.
 - DN 200-300 = 5mbar.
 - Disc in horizontal position (vertical flow from down to up).
 - DN 32-150 = 15mbar.
 - DN 200-300 = 20mbar.

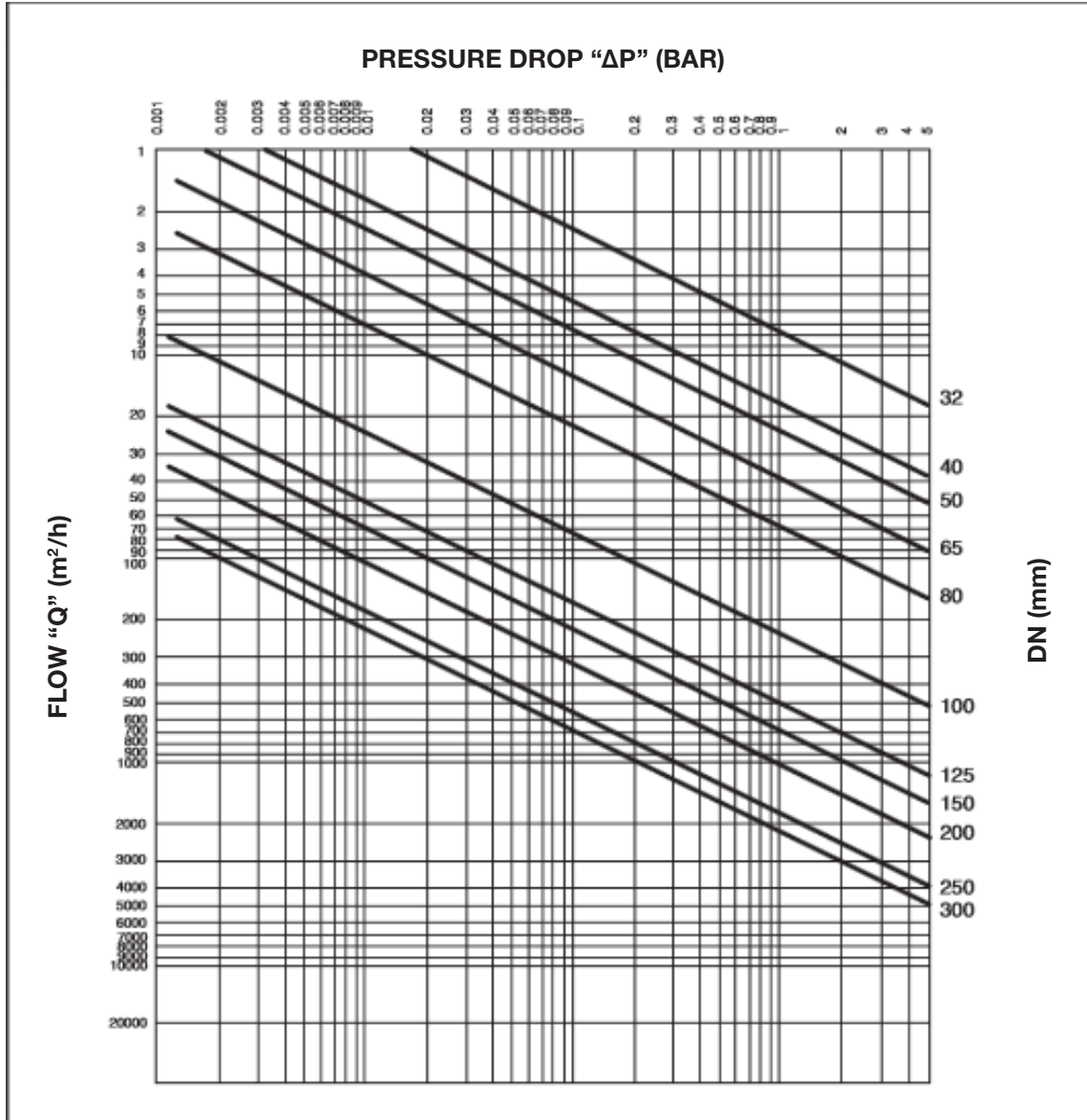


DIMENSIONS



DIMENSIONS (mm)						
DN	A	B	C	D	E	Kg
32	14	26	16	83	88	0.6
40	14	30	22	95	97	0.7
50	14	35	32	109	104	0.9
65	14	48	40	129	114	1.2
80	14	60	54	144	122	1.5
100	18	78	70	164	132	2.4
125	18	98	92	195	147	3.4
150	20	117	112	220	160	4.6
200	22	160	154	275	187	7.5
250	26	200	200	332	219	15.3
300	32	235	240	387	255	23.0

PRESSURE DROP



DN	32	40	50	65	80	100	125	150	200	250	300
Cv	8.7	20.0	29.5	49.0	78.0	286.0	635.0	840.0	1205.0	2200.0	2560.0

SUGGESTED BOLTS

SIZE	QUANTITY	PN 10/16		PN 25/40	
		BOLTS	TIE ROD	BOLTS	TIE ROD
32	4	M16 x 70	M16 x 90	M16 x 80	M16 x 10
40	4	M16 x 70	M16 x 90	M16 x 80	M16 x 100
50	4	M16 x 80	M16 x 100	M16 x 80	M16 x 100
65	4	M16 x 80	M16 x 100	M16 x 90	M16 x 110
80	8	M16 x 80	M16 x 100	M16 x 90	M20 x 120
100	8	M16 x 90	M16 x 110	M20 x 100	M24 x 120
125	8	M16 x 90	M16 x 110	M24 x 100	M24 x 130
150	8	M20 x 90	M20 x 110	M24 x 110	M24 x 110
200 PN 10	8	M20 x 110	M20 x 130		
200 PN 16	12	M20 x 110	M20 x 130		
200 PN 25	12			M24 x 120	M24 x 140
200 PN 40	12			M27 x 130	M27 x 150
250 PN 10	12	M20 x 110	M20 x 130		
250 PN 16	12	M22 x 110	M22 x 130		
250 PN 25	12			M27 x 130	M27 x 150
250 PN 40	12			M30 x 140	M30 x 160
300 PN 10	12	M20 x 130	M20 x 150		
300 PN 16	12	M22 x 130	M22 x 150		
300 PN 25	16			M27 x 140	M27 x 160
300 PN 40	16			M30 x 160	M30 x 180