

INVERTED BUCKET STEAM TRAPS

BT-16

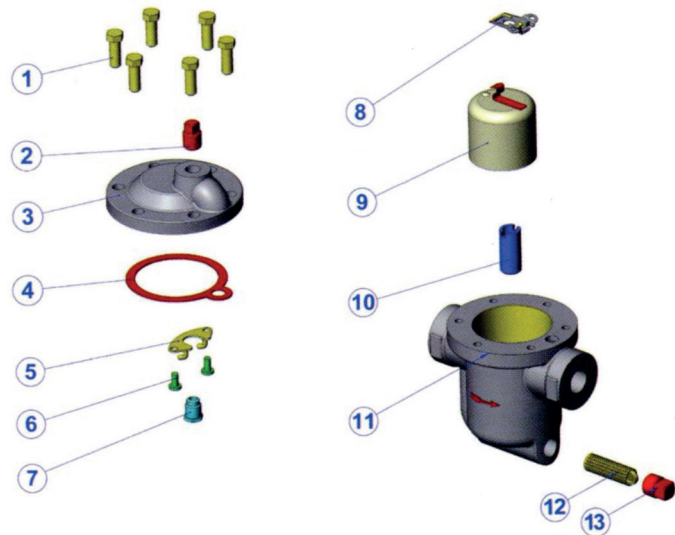
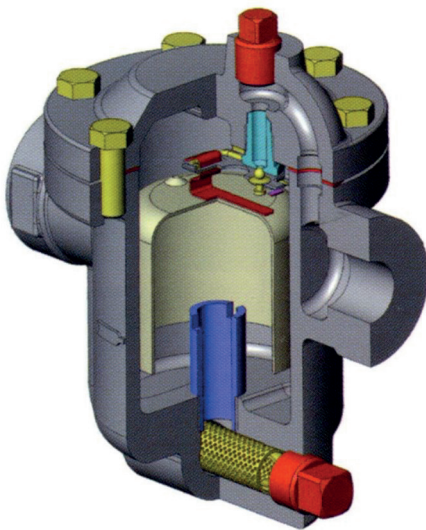


Inverted bucket steam traps, ductile iron, PN 16 with 3 applicable differential pressure.

Available versions

- threaded F/F BSP or NPT - flanged
- differential pressure:
5,4 bar / 8,5 bar / 15,5 bar

BT-16



BT-16			
N°	ITEM	MATERIAL	STANDARD
1	COVER NUT	STAINLESS STEEL	AISI 304
2	PLUG	CAST STEEL	ST 37-2
3	COVER	DUCTILE IRON	GGG40
4	GASKET	GRAPHITE	-
5	GUIDE	STAINLESS STEEL	AISI 304
6	NUT	STAINLESS STEEL	AISI 304
7	BUCKET SEAT	STAINLESS STEEL	AISI 304
8	BALL GUIDE	STAINLESS STEEL	AISI 304
9	BUCKET	STAINLESS STEEL	AISI 304
10	ADJUSTMENT NUT	STAINLESS STEEL	AISI 304
11	BODY	DUCTILE IRON	GGG40
12	STRAINER	STAINLESS STEEL	AISI 304
13	STRAINER PLUG	CAST STEEL	ST 37-2

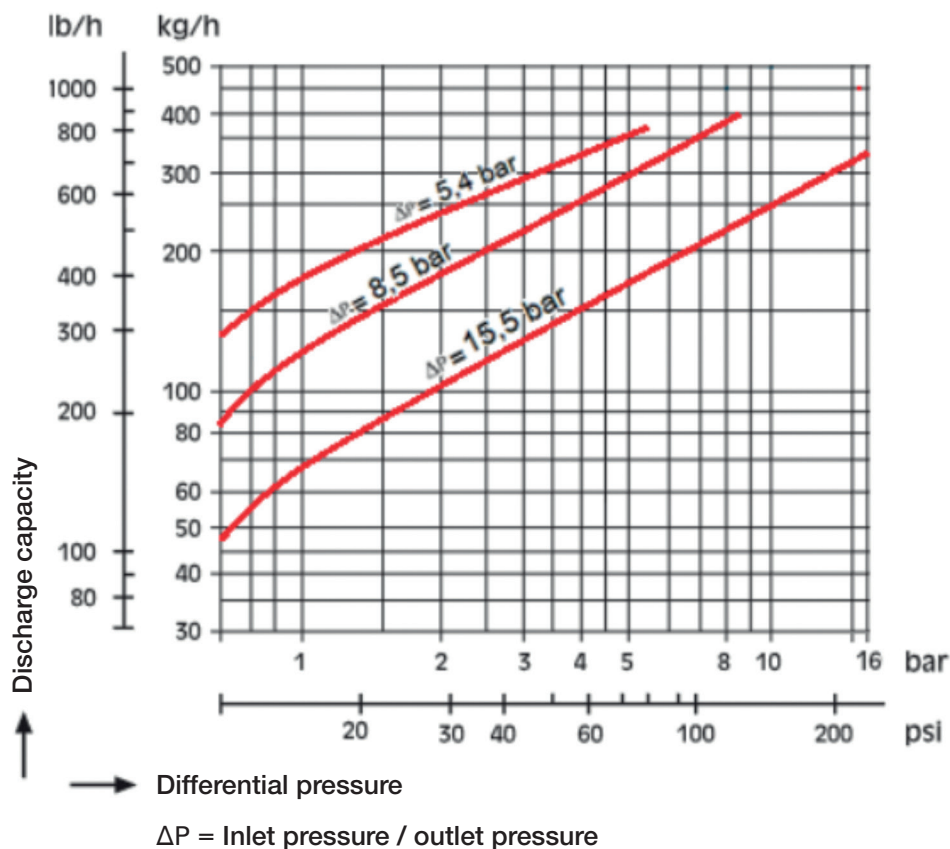
INVERTED BUCKET STEAM TRAPS

BT-16

TECHNICAL DETAILS

- Body and cover in ductile iron.
- Trim in stainless steel.
- Threaded ends: F/F BSP (standard in stock) or NPT.
- Flanged ends: PN 10/16 flanges.
- Sizes: from 1/2" to 1" – from DN 15 to DN 25.
- Three applicable differential pressure items: 5,4 – 8,5 – 15,5 bar.
- Steam trap is used for discharging the condensate by a mechanical system of bucket.
- High water hammer resistance.
- Rating: PN 16.
- Maximum working temperature: 220°C.
- Suitable for horizontal installation.

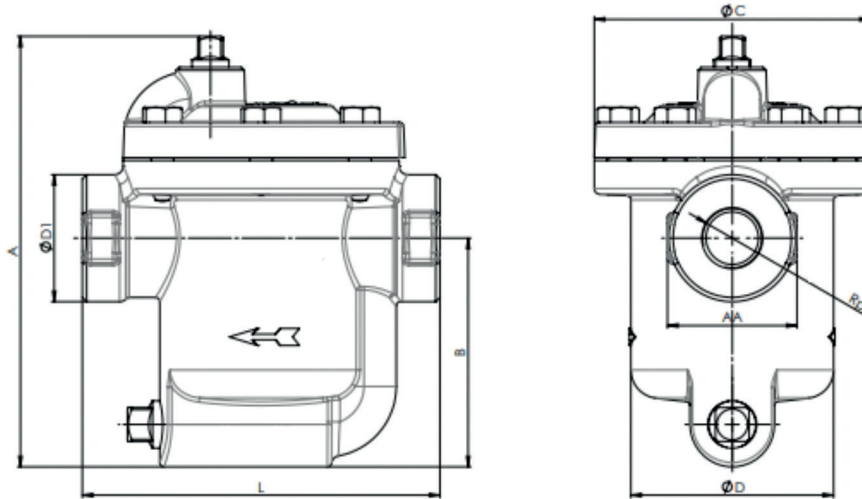
DISCHARGE CAPACITIES



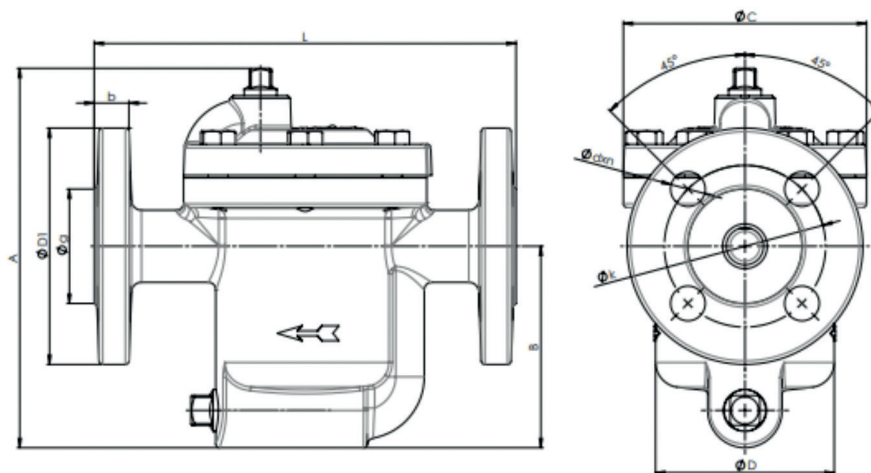
INVERTED BUCKET STEAM TRAPS

BT-16

DIMENSIONS



DIMENSIONS (mm)							
SIZE	A	B	ØC	ØD	ØD1	L	AA
1/2"	153	81	98	72	45	127	46
3/4"	153	81	98	72	45	127	46
1"	183	103	98	72	55	127	56



DIMENSIONS (mm)										
DN	A	B	ØC	ØD	ØD1	L	Øk	Øg	b	Ødxn
15	153	81	98	72	95	170	65	46	14	14x4
20	153	81	98	72	105	180	75	56	16	14x4
25	183	103	98	72	115	195	85	65	16	14x4